

EAU00028

Main switch

The main switch controls the ignition and lighting systems. The various main switch positions are described below.

EAU00032

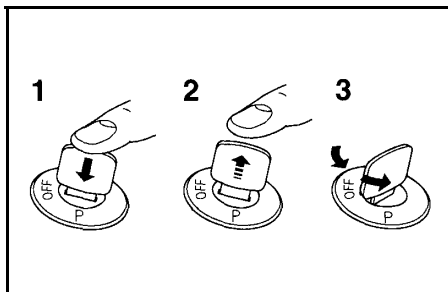
ON

All electrical systems are supplied with power, the headlight, meter lighting, taillight and front position lights come on, and the engine can be started. The key cannot be removed.

EAU00038

OFF

All electrical systems are off. The key can be removed.



1. Push.
2. Release.
3. Turn

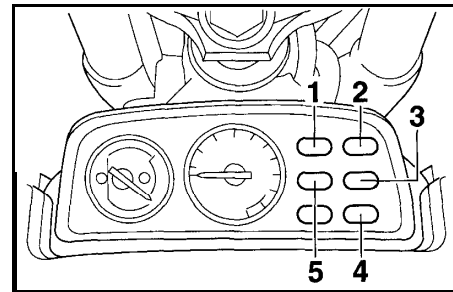
P (Parking)

The meter light, taillight and position lights are on, but all other electrical systems are off. The key can be removed. The key must be pushed in from the "OFF" position to be turned to "P".

ECA00043

CAUTION:

Do not use the parking position for an extended length of time, otherwise the battery may discharge.



1. Neutral indicator light 'NEUTRAL'
2. Turn signal indicator light 'TURN'
3. Fuel level warning light 'FUEL'
4. High beam indicator light 'HIGH BEAM'
5. Oil level warning light 'OIL LEVEL'

EAU03034

Indicator and warning lights

EAU00062

Neutral indicator light "NEUTRAL"

This indicator light comes on when the transmission is in the neutral position.

EAU00059

Turn signal indicator light "TURN"

This indicator light flashes when the turn signal switch is pushed to the left or right.

INSTRUMENT AND CONTROL FUNCTIONS

EAU03365

Fuel level warning light “FUEL”

This warning light comes on when the fuel level drops below approximately 3 L (0.7 Imp gal, 0.8 US gal). When this occurs, refuel as soon as possible.

The electrical circuit of the warning light can be checked according to the following procedure.

1. Turn the key to “ON”.
2. If the warning light does not come on, have a Yamaha dealer check the electrical circuit.

EAU00064

High beam indicator light “HIGH BEAM”

This indicator light comes on when the high beam of the headlight is switched on.

EAU03366

Oil level warning light “OIL LEVEL”

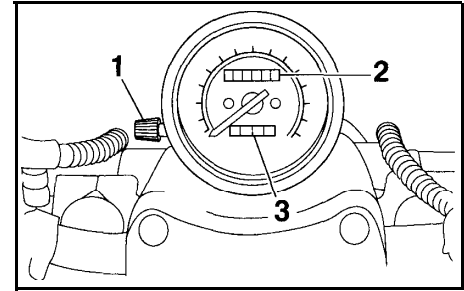
This warning light comes on when the engine oil level is low.

The electrical circuit of the warning light can be checked according to the following procedure.

1. Turn the key to “ON”.
2. If the warning light does not come on, have a Yamaha dealer check the electrical circuit.

NOTE: _____

Even if the oil level is sufficient, the warning light may flicker when riding on a slope or during sudden acceleration or deceleration, but this is not a malfunction.



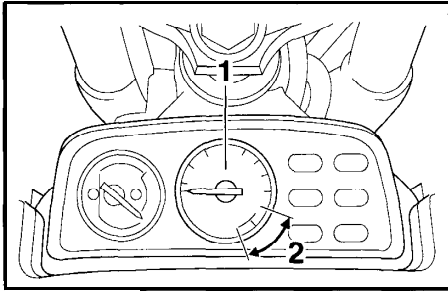
1. Tripmeter reset knob
2. Odometer
3. Tripmeter

EAU00095

Speedometer unit

The speedometer unit is equipped with a speedometer, an odometer and a tripmeter. The speedometer shows riding speed. The odometer shows the total distance traveled. The tripmeter shows the distance traveled since it was last set to zero with the reset knob. The tripmeter can be used to estimate the distance that can be traveled with a full tank of fuel. This information will enable you to plan future fuel stops.

INSTRUMENT AND CONTROL FUNCTIONS



1. Tachometer
2. Red zone

Tachometer

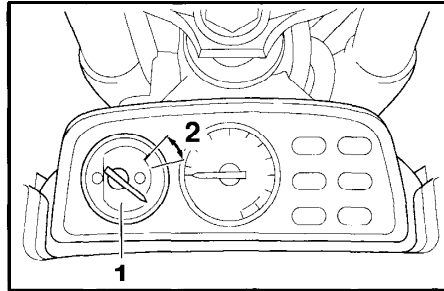
The electric tachometer allows the rider to monitor the engine speed and keep it within the ideal power range.

EC000003

CAUTION:

Do not operate the engine in the tachometer red zone.

Red zone: 8,500 r/min and above



1. Coolant temperature gauge
2. Red zone

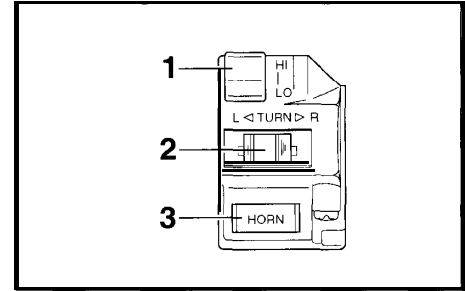
Coolant temperature gauge

With the key in the "ON" position, the coolant temperature gauge indicates the temperature of the coolant. The coolant temperature varies with changes in the weather and engine load. If the needle reaches or enters the red zone, stop the motorcycle and let the engine cool. (See page 6-47 for further instructions.)

EC000002

CAUTION:

Do not operate the engine if it is overheated.



1. Dimmer switch "LIGHTS"
2. Turn signal switch "TURN"
3. Horn switch "HORN"

Handlebar switches

Dimmer switch "LIGHTS"

Set the switch to "HI" for the high beam and to "LO" for the low beam.

Turn signal switch "TURN"

To signal a right-hand turn, push this switch to the right. To signal a left-hand turn, push the switch to the left. When released, the switch returns to the center position.

INSTRUMENT AND CONTROL FUNCTIONS

EAU01653

Since this model is equipped with a self-canceling system, the turn signal lights will self-cancel after the motorcycle has traveled both about 150 m (490 ft) and for approximately 15 seconds. However, the turn signal lights can also be canceled manually by pushing the switch in after it has returned to the center position.

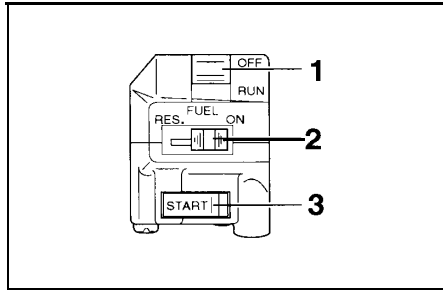
NOTE: _____

The self-canceling system only operates when the motorcycle is moving, so that the turn signal lights will not self-cancel while you are stopped at an intersection.

30

Horn switch “HORN”

Press this switch to sound the horn.



1. Engine stop switch “ENGINE STOP”
2. Fuel reserve switch “FUEL”
3. Start switch “START”

Engine stop switch “ENGINE STOP”

Set this switch to “OFF” to stop the engine in case of an emergency, such as when the motorcycle overturns or when the throttle cable is stuck.

Fuel reserve switch “FUEL”

During normal operation, this switch should be kept in the “ON” position. If the fuel warning light comes on while riding, set the switch to “RES”, refuel as soon as possible, and then set the switch back to “ON”.

NOTE: _____

After switching to “RES”, approximately 3 L (0.7 Imp gal, 0.8 US gal) of fuel remain in the fuel tank.

Start switch “START”

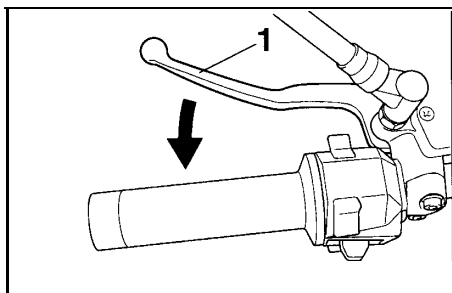
Push this switch to crank the engine with the starter.

EC000005

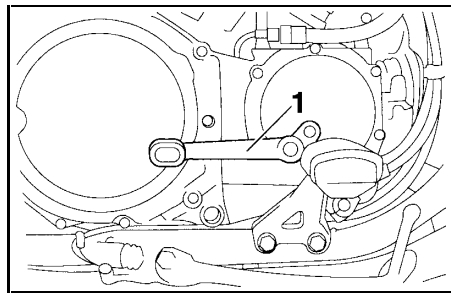
CAUTION: _____

See page 5-1 for starting instructions prior to starting the engine.

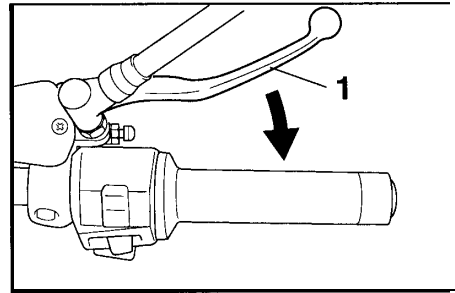
INSTRUMENT AND CONTROL FUNCTIONS



1. Clutch lever



1. Shift pedal



1. Brake lever

Clutch lever

The clutch lever is located at the left handlebar grip. To disengage the clutch, pull the lever toward the handlebar grip. To engage the clutch, release the lever. The lever should be pulled rapidly and released slowly for smooth clutch operation.

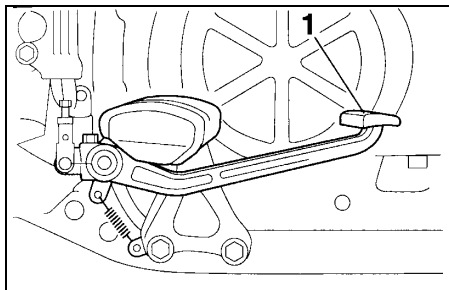
The clutch lever is equipped with a clutch switch, which is part of the ignition circuit cut-off system. (See page 3-17 for an explanation of the ignition circuit cut-off system.)

Shift pedal

The shift pedal is located on the left side of the engine and is used in combination with the clutch lever when shifting the gears of the 5-speed constant-mesh transmission equipped on this motorcycle.

Brake lever

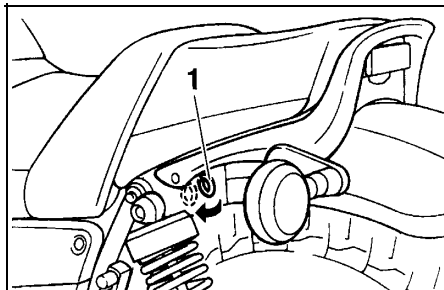
The brake lever is located at the right handlebar grip. To apply the front brake, pull the lever toward the handlebar grip.



1. Brake pedal

Brake pedal

The brake pedal is on the right side of the motorcycle. To apply the rear brake, press down on the brake pedal.

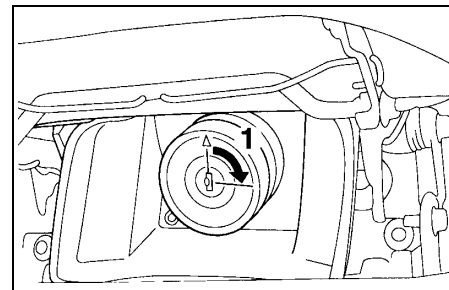


1. Lever (x 2)

Fuel tank cap

To remove the fuel tank cap

1. Push the levers on the left and right side of the rider seat backrest as shown and slide the rider seat backrest forward.



1. Open

2. Insert the key into the lock, and then turn it 1/4 turn clockwise. The lock will be released and the fuel tank cap can be opened.

INSTRUMENT AND CONTROL FUNCTIONS

EAU00185

To install the fuel tank cap

1. Insert the fuel tank cap into the tank opening with the key inserted in the lock.
2. Turn the key counterclockwise, and then remove it.
3. Slide the rider seat backrest rearward and push it down.

NOTE:

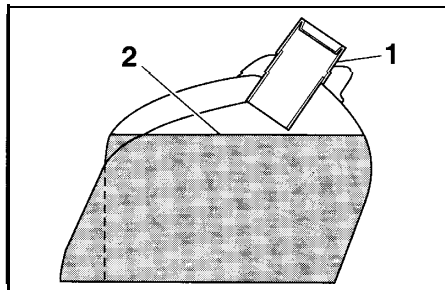
The fuel tank cap cannot be installed unless the key is in the lock. In addition, the key cannot be removed if the cap is not properly installed and locked.

EW000024



WARNING

Make sure that the fuel tank cap is properly installed before riding.



1. Filler tube
2. Fuel level

Fuel

Make sure that there is sufficient fuel in the tank. Fill the fuel tank to the bottom of the filler tube as shown in the illustration.

EW000130



WARNING

- **Do not overfill the fuel tank, otherwise it may overflow when the fuel warms up and expands.**
- **Avoid spilling fuel on the hot engine.**

CAUTION:

Immediately wipe off spilled fuel with a clean, dry, soft cloth, since fuel may deteriorate painted surfaces or plastic parts.

EAU00189

Recommended fuel:

UNLEADED FUEL

Fuel tank capacity:

Total amount:

15 L (3.3 Imp gal, 4.0 US gal)

Reserve amount:

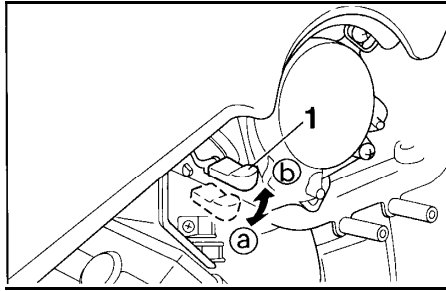
3 L (0.7 Imp gal, 0.8 US gal)

Your Yamaha engine has been designed to use regular unleaded gasoline with a pump octane number $[(R+M)/2]$ of 86 or higher, or a research octane number of 91 or higher. If knocking (or pinging) occurs, use a gasoline of a different brand or premium unleaded fuel. Use of unleaded fuel will extend spark plug life and reduce

maintenance costs. If unleaded gasoline is not available, then leaded regular gasoline can be used.

Gasohol

There are two types of gasohol: gasohol containing ethanol and that containing methanol. Gasohol containing ethanol can be used if the ethanol content does not exceed 10%. Gasohol containing methanol is not recommended by Yamaha because it can cause damage to the fuel system or vehicle performance problems.



1. Starter (choke) lever

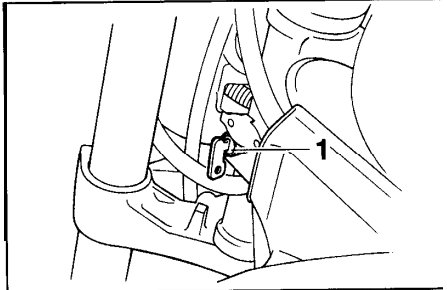
Starter (choke) lever

Starting a cold engine requires a richer air-fuel mixture, which is supplied by the starter (choke).

Move the lever in direction a to turn on the starter (choke).

Move the lever in direction b to turn off the starter (choke).

INSTRUMENT AND CONTROL FUNCTIONS



1. Steering lock

EAU03342

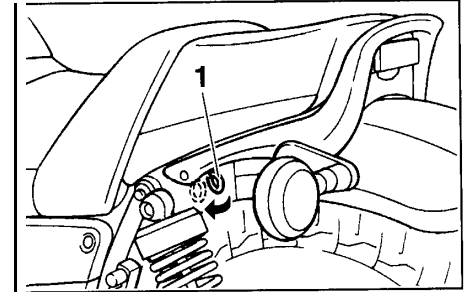
Steering lock

To lock the steering

1. Turn the handlebar all the way to the right.
2. Open the steering lock cover, and then insert the steering lock key.
3. Turn the key 1/8 turn counterclockwise, push it in while turning the handlebar slightly to the left, and then turn the key 1/8 turn clockwise.
4. Check that the steering is locked, remove the key, and then close the lock cover.

To unlock the steering

1. Open the steering lock cover, and then insert the steering lock key.
2. Push the key in, turn it 1/8 turn counterclockwise so that it moves out, and then release it.
3. Remove the key, and then close the lock cover.



1. Lever (x 2)

EAU03413

Rider seat

To remove the rider seat

1. Release the rider seat backrest by pushing the levers on the left and right side as shown, and then slide the backrest forward.